

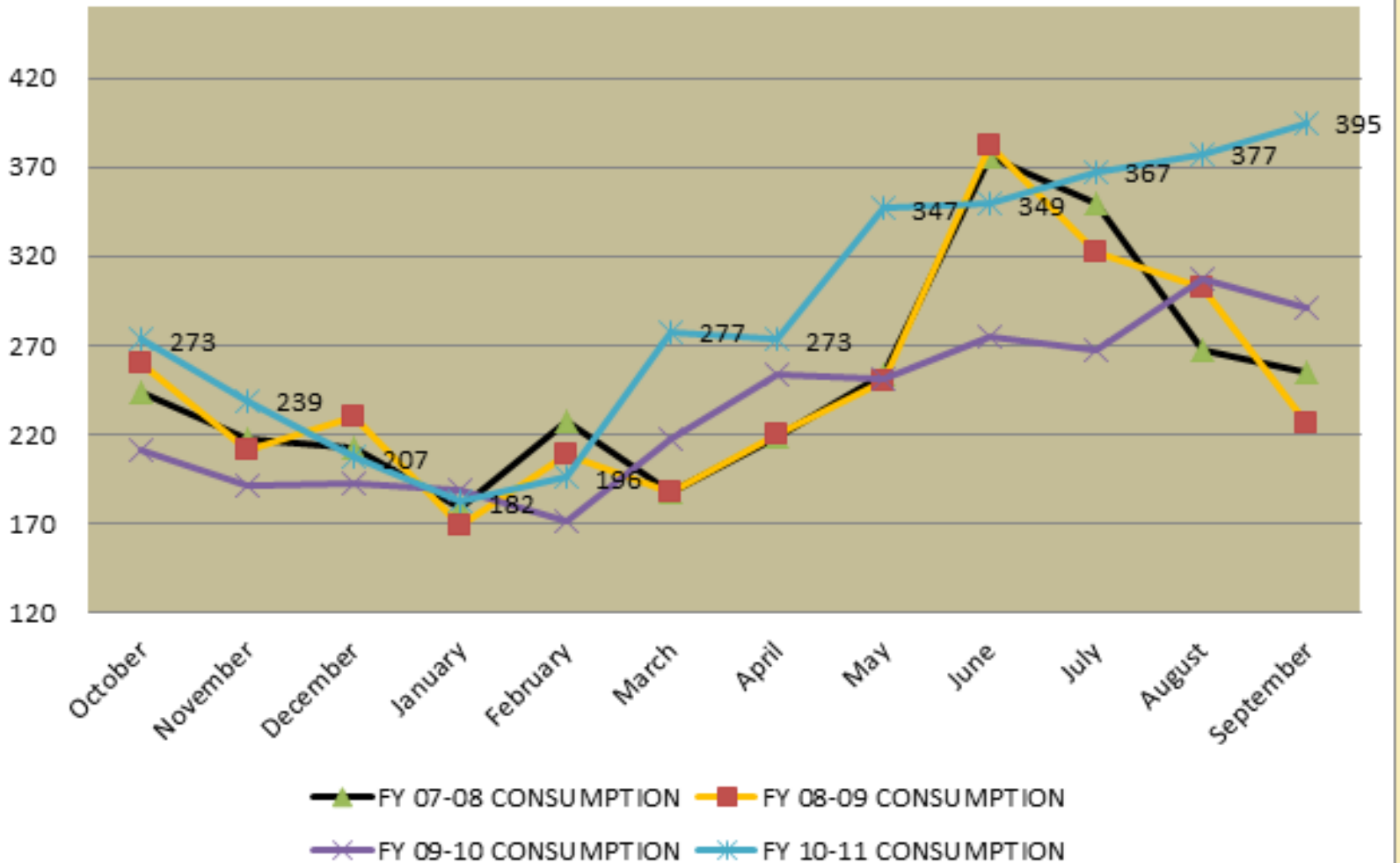


CITY OF CONROE 2012 INFORMATIONAL PROGRAM FOR PERMITTED USERS





WATER CONSUMPTION CHART





City-wide Total Water Usage History

- FY 2007-2008 = 3,265,376,000 gallons
- FY 2008-2009 = 3,235,734,000 gallons
- FY 2009-2010 = 3,283,905,000 gallons
- FY 2010-2011 = 4,223,555,000 gallons*

- FY 2010-2011 – 939,718,000 more gallons of water pumped than 2009-2010

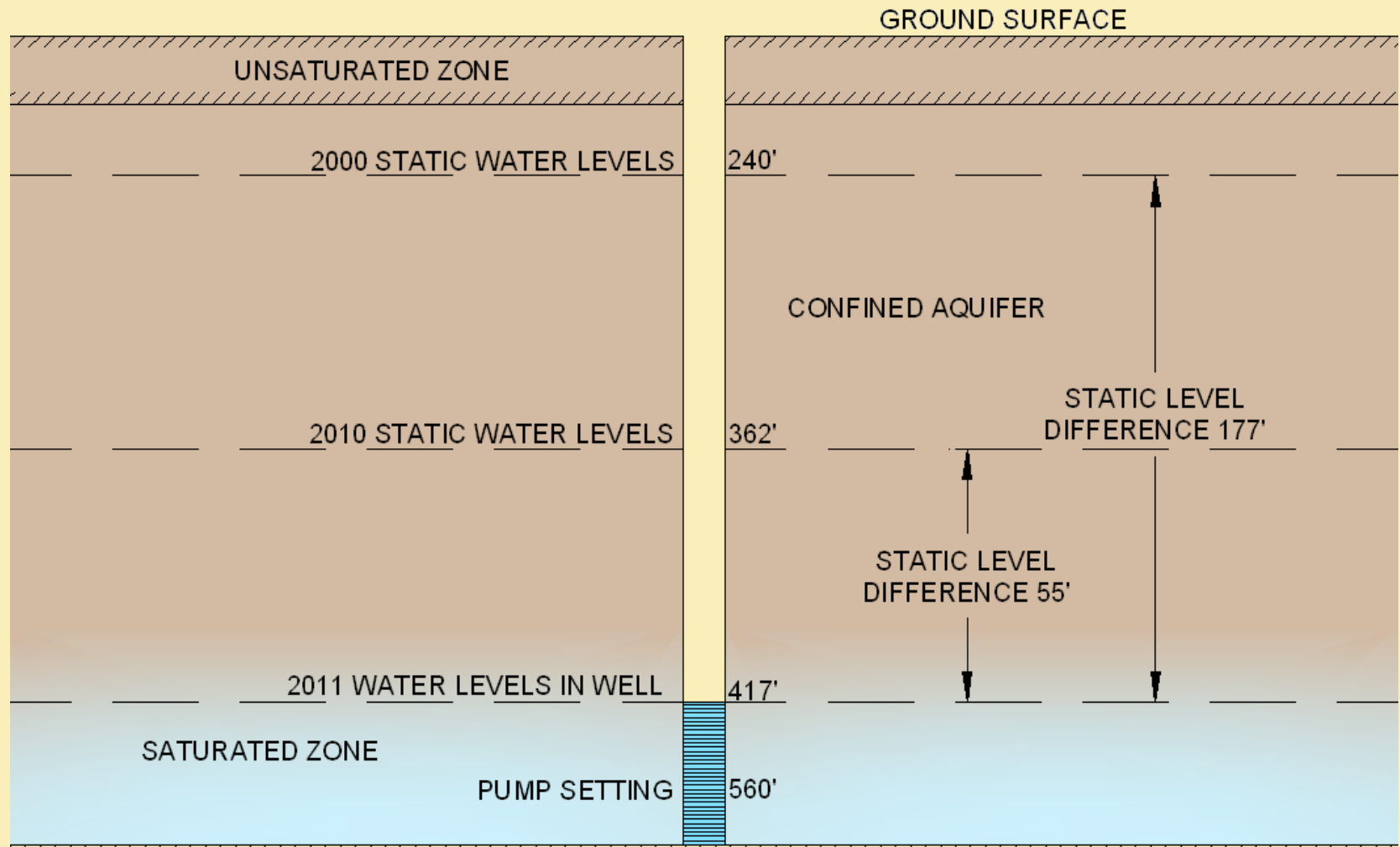
*** Extreme Drought Conditions**



**We've been
drawing
down our
aquifers
faster than
they can
recharge.**

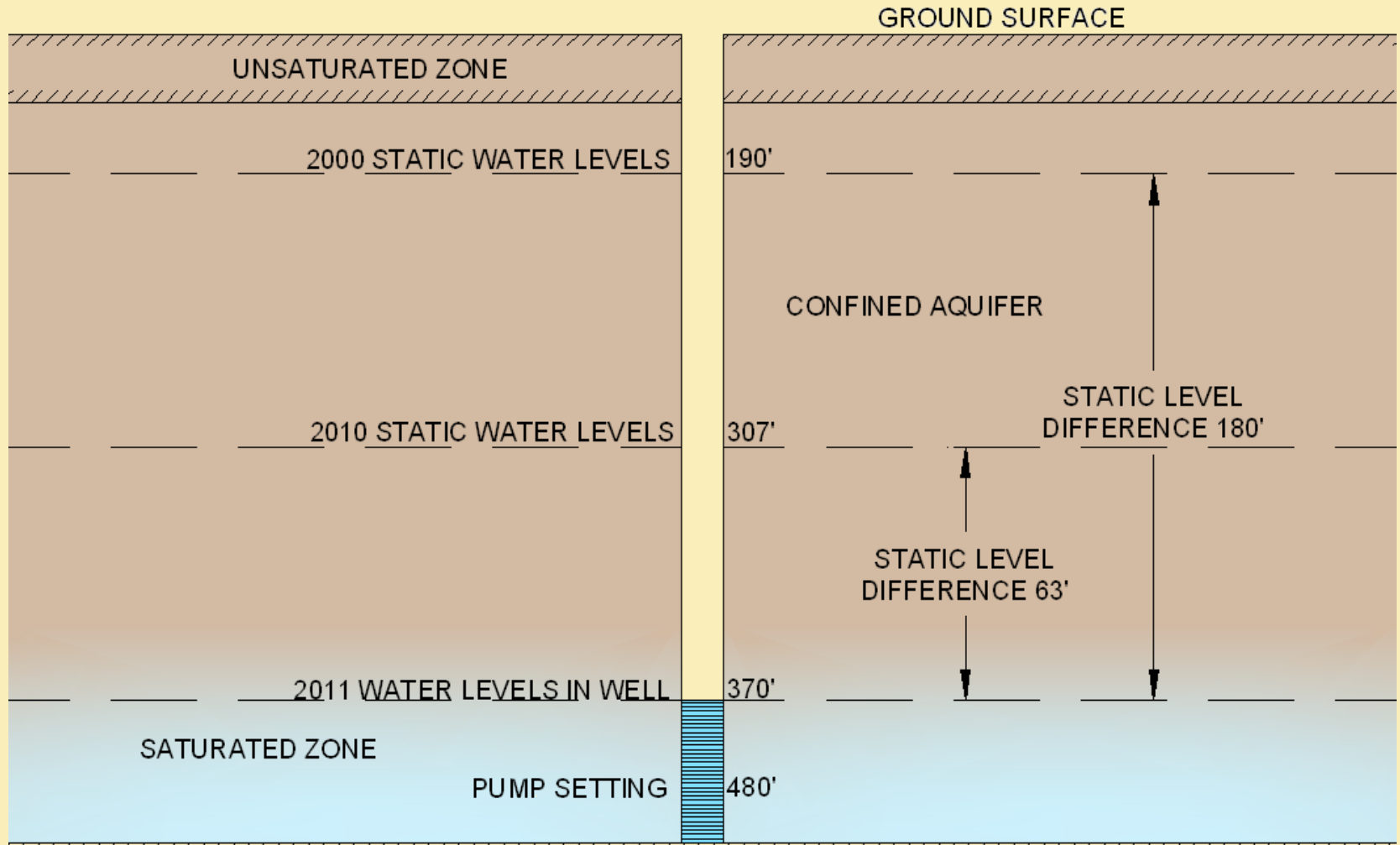


CITY OF CONROE WATER WELL STATIC LEVEL WELL NO. 5 - EVANGELINE AQUIFER



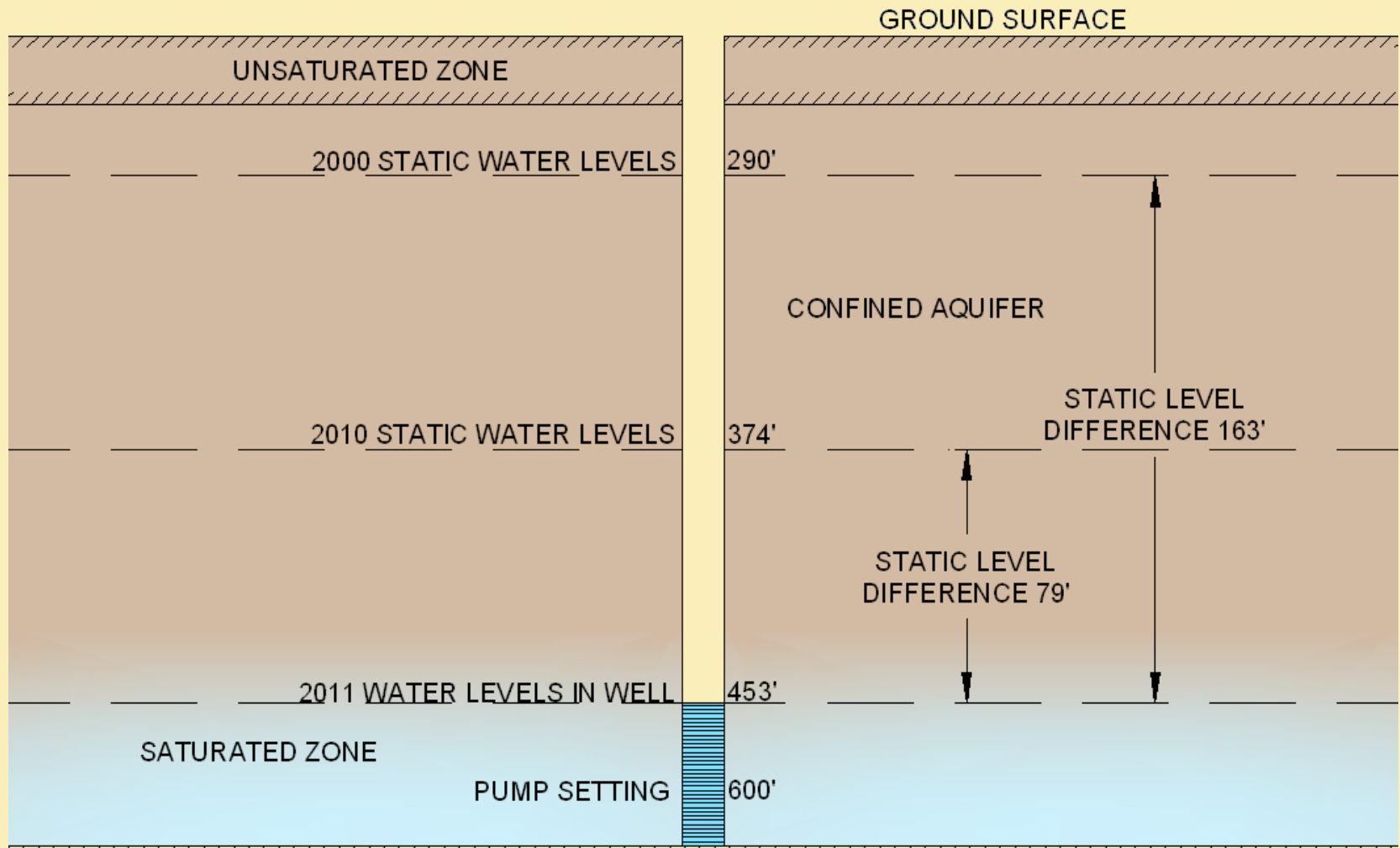


CITY OF CONROE WATER WELL STATIC LEVEL WELL NO. 7 - EVANGELINE AQUIFER





CITY OF CONROE WATER WELL STATIC LEVEL WELL NO. 12 - JASPER AQUIFER





City of Conroe New Stage 2 Watering Schedule Two Day Watering ONLY



STAGE 2
MANDATORY
ODD/EVEN
WATER
RESTRICTIONS
TAKES EFFECT
JANUARY 2, 2012

RESIDENTIAL
ODD ADDRESS

RESIDENTIAL
EVEN ADDRESS

POA/HOA
COMMERCIAL,
MULTIFAMILY
ODD ADDRESS

POA/HOA
COMMERCIAL,
MULTIFAMILY
EVEN ADDRESS

AUTOMATIC IRRIGATION SYSTEMS AND
HOSE-END SPRINKLERS: 10:00 PM TO 4:00 AM

Saturday &
Wednesday

Sunday &
Thursday

Saturday &
Wednesday

Sunday &
Thursday

Violations are subject to additional surcharge on the water bill. First violation observed in any calendar year will result in a warning. Only one warning will be given per calendar year. Additional Violations will be subject to a surcharge on the water bill. 2nd violation \$50, 3rd violation \$100, 4th violation \$200

REPORT VIOLATIONS TO: 936-522-3885



Commercial Water Rates – Past, Current and Future

	FY	%	FY	%	FY	%
<u>Water Rates:</u>	06_07	Incr.	07_08	Incr.	08_09	Incr.
0 - 3,000 gal. (minimum charge)	\$8.27	5.25%	\$8.71	5.25%	\$9.17	5.25%
3,001 - 9,999 gal. (per 1,000 gal.)	\$ 2.05	5.25%	\$2.16	5.25%	\$2.27	5.25%
10,000 - 14,999 gal. (per 1,000 gal.)	\$ 2.53	5.25%	\$2.66	5.25%	\$2.80	5.25%
15,000 - 49,999 gal. (per 1,000 gal.)	\$ 2.05	5.25%	\$2.16	5.25%	\$2.27	5.25%
Over 50,000 gal. (per 1,000 gal.)	\$ 1.94	5.25%	\$2.04	5.25%	\$2.15	5.25%



Commercial Water Rates	FY	FY	%	FY	%
<u>Water Rates</u>	09_10	10_11	Incr.	11_12	Incr.
0 - 3,000 gallons (minimum charge)	\$0.00	\$0.00	n/a	\$ -	n/a
3,001 - 9,999 gal. (per 1,000 gallons)	\$ 2.00	\$ 2.50	25.00%	\$ 2.50	n/a
10,000 - 14,999 gal. (per 1,000 gallons)	\$ 2.00	\$ 2.75	37.50%	\$ 2.75	n/a
15,000 - 24,999 gal. (per 1,000 gallons)	\$ 2.50	\$ 3.25	30.00%	\$ 3.25	n/a
25,000 - 34,999 gal. (per 1,000 gallons)	\$ 3.00	\$ 3.75	25.00%	\$ 3.75	n/a
35,000 -49,999 gal. (per 1,000 gallons)	\$ 3.00	\$ 4.75	58.40%	\$ 4.75	n/a
50,000 - 74,999 gal. (per 1,000 gallons)	\$ 3.50	\$ 4.75	35.70%	\$ 4.75	n/a
Over 75,000 gal. (per 1,000 gallons)	\$ 2.25	\$ 2.25	n/a	\$ 2.25	n/a
<u>Sewer Rates</u>					
0 - 3,000 gal. (minimum charge)	\$17.43	\$18.35	5.25%	\$19.27	5.00%
3,000+ (per 1,000 gal.)	\$ 2.13	\$ 2.24	5.25%	\$ 2.35	5.00%



SJRA has a surcharge for the 500 million dollar construction project for delivering surface water from Lake Conroe to the City of Conroe & The Woodlands by January 2016.	May	FY	FY	FY	FY	FY	FY
	2010	10_11	11_12	12_13	13_14	14_15	15_16
Surface Water Fee (SJRA)	\$ 0.50	\$ 0.75	\$ 1.05	Estimate \$ 1.30	Estimate \$ 1.80	Estimate \$ 2.30	Estimate \$ 2.45



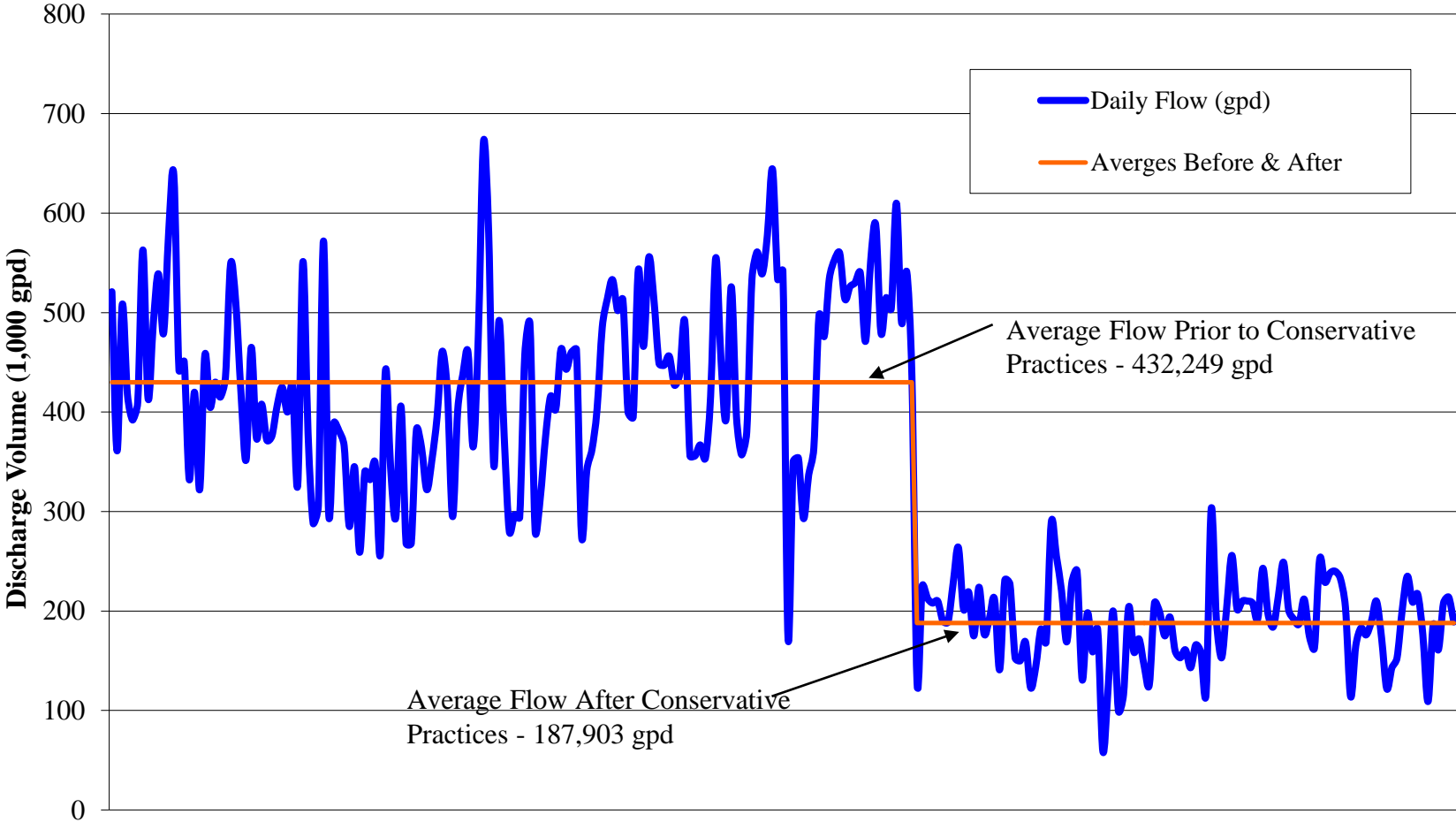
Comparison City Sewer Rates

College Station	50 k/gals = \$217.61	200 k/gals = \$826.61
Pearland	50 k/gals = \$159.85	200 k/gals = \$614.35
Sugar Land	50 k/gals = \$231.97	200 k/gals = \$666.97
Victoria	50 k/gals = \$285.07	200 k/gals = \$673.97
Lufkin	50 k/gals = \$194.03	200 k/gals = \$767.03
Bryan	50 k/gals = \$197.88	200 k/gals = \$767.88
Temple	50 k/gals = \$214.00	200 k/gals = \$851.50
Conroe	50 k/gals = \$129.72	200 k/gals = \$482.22

Water Conservation Impact on Permit Limits

Average Flow	Permit Limit in mg/L	Permit Limit in Pounds/day
50,000	100	41.7
75,000	100	62.6
100,000	100	83.4
250,000	100	208.5
450,000	100	375.3
Reduce Flow by 50%	New Discharge Level	Pounds Discharged
25,000	200	41.7
37,500	200	62.6
50,000	200	83.4
125,000	200	208.5
225,000	200	375.3

EXAMPLE OF AN INDUSTRY INTRODUCING CONSERVATION AND REDUCING WATER



Changing from Concentration to Mass limits Regulations and Requirements

- Industry must employ water conservation methods that substantially reduce water use
- Consistently complied with pretreatment standards prior to requesting change
- Discharge flow must be relatively consistent from day to day
- Water usage increases in excess of 20% must be reported so Mass limits can be reevaluated



Questions?